

# EARTHQUAKE SAFETY AND EMERGENCY RESPONSE BOND 2014 SFPD TRAFFIC COMPANY AND FORENSIC SERVICES DIVISION FACILITY



## CONSTRUCTION NEWSLETTER – MARCH 2020

### Highlights

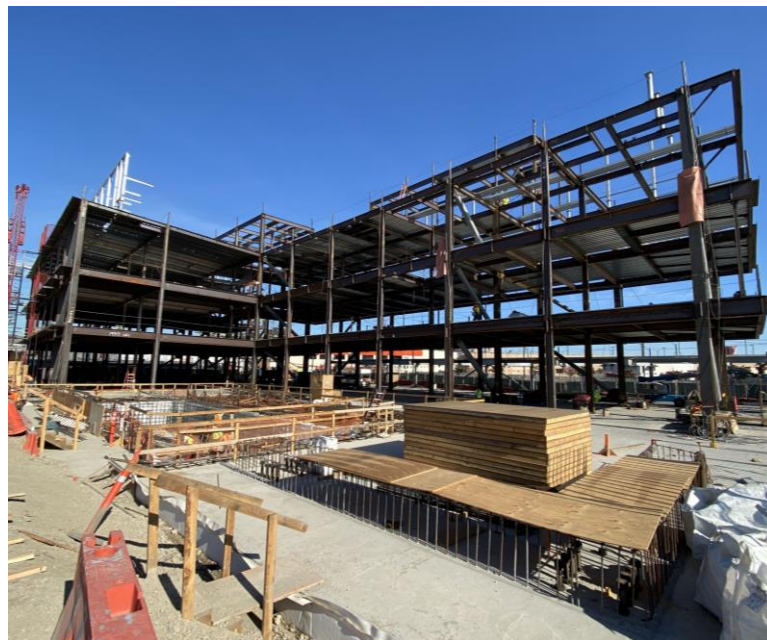
- Installed rebar for perimeter walls at fire water tank.
- Structural steel erection is 75% complete.

### Construction Activity Schedule

- **March 2020:**
  - Welding at level 3, roof, and motorcycle garage.
  - Install metal decking and layout MEP inserts at levels 2 and 3 and roof.
  - Place concrete at fire water tank walls.
  - Install forms and rebar for concrete at level 2.
- **April 2020:**
  - Structural steel topping-out ceremony tentatively scheduled for April 1st.
  - Demobilize small erection crane.
  - Install forms and rebar for concrete at levels 2 and 3.
  - Place concrete deck slabs at levels 2 and 3.

### Other Information

- View progress photos and subscribe to this newsletter: [sfearthquakesafety.org/motorcycle-police-and-crime-lab](http://sfearthquakesafety.org/motorcycle-police-and-crime-lab)



View from South Elevation of Structural Steel and Metal Decking  
(February 27, 2020)



Design Rendering – View from Intersection of Evans Ave. & Toland St.



North and West Elevations – View from Intersection of Evans Ave. & Toland St.  
(February 27, 2020)

## SCHEDULE

\*Construction schedule is subject to change due to adverse weather and unforeseen conditions.

**MAR 2020**

- Metal decking
- Concrete deck slab at level 1
- Finish erection of structural steel

**APR 2020**

- Structural steel topping-out ceremony
- Concrete deck slabs at levels 2 and 3
- Off-site utilities

...

**FALL 2021**

- Construction completion
- SFPD move-in

### For more information:

Michael Rossetto, Project Manager  
Michael.Rossetto@sfdpw.org  
(415) 557-4773

### For immediate service regarding construction issues:

Robert Tigbao, Resident Engineer  
Robert.Tigbao@sfdpw.org  
(415) 244-4049

### For emergencies:

Clark Construction Group  
Douglas Jagoda, Superintendent  
(240) 305-9112