

# EARTHQUAKE SAFETY AND EMERGENCY RESPONSE BOND 2014 FIREBOAT STATION 35 AT PIER 22½



## CONSTRUCTION NEWSLETTER – MARCH 2020

### Highlights

- Demolition of the dilapidated finger piers, storage shed, and parking lot at Pier 22½ was completed in October 2019.
- Steel float was delivered to Pier 1 at Treasure Island on February 1, 2020.
- Structural steel topping-out occurred on March 4, 2020.

### Construction Activity Schedule

- **March 2020:**
  - Plumb and weld structural steel.
  - Layout and weld metal decking and layout MEP inserts at level 2 and roof.
  - Install forms and rebar for concrete at level 2 and roof.
- **April 2020:**
  - Place concrete deck slabs at level 2 and roof.
  - Begin install of exterior and interior steel stud framing.

### Other Information

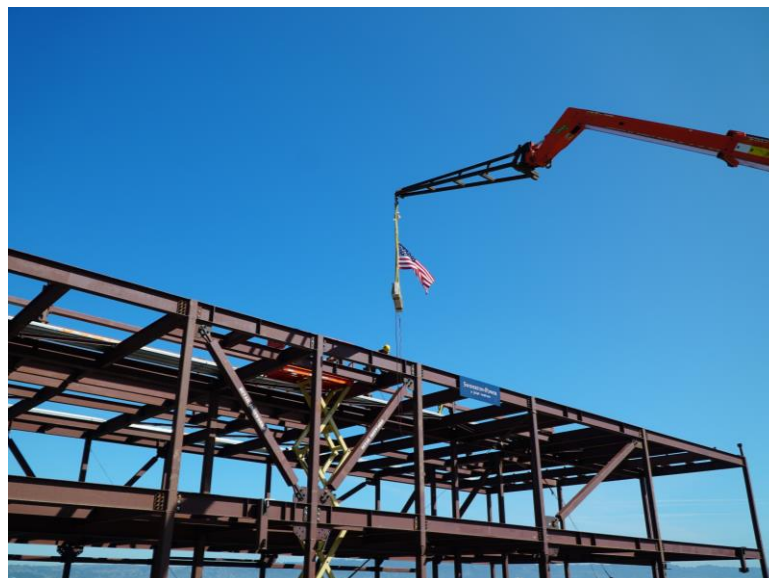
- Fire Station No. 35 at Pier 22½ will remain open and continue to provide landside and waterside service throughout construction.
- For more information, progress photos, and to subscribe to this newsletter, please visit the link below:  
[www.sfearthquakesafety.org/fireboatstation35](http://www.sfearthquakesafety.org/fireboatstation35)



Steel Float and Steel Superstructure at Pier 1, Treasure Island – March 1, 2020



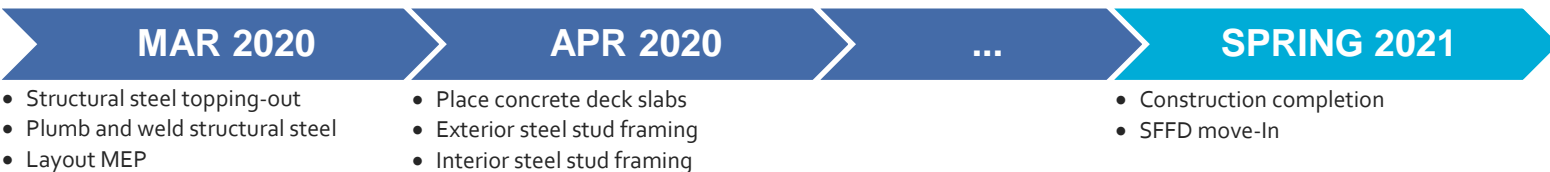
Design Rendering – View of Pier 22½ from the Embarcadero



Hoisting the Final Steel Beam into Place – March 4, 2020

## SCHEDULE

\*Construction schedule is subject to change due to adverse weather and unforeseen conditions.



### For more information:

M. Magdalena Ryor, Project Manager  
Magdalena.Ryor@sfdpw.org  
(415) 557-4659

### For immediate service regarding construction issues:

Pano Ray, Resident Engineer  
Pano.Ray@sfdpw.org  
(415) 654-7960

### For emergencies:

Swinerton-Power, a Joint Venture  
Marlene Moncada, Project Manager  
(415) 850-0807