

# EARTHQUAKE SAFETY AND EMERGENCY RESPONSE BOND 2014 FIREBOAT STATION 35 AT PIER 22½



CONSTRUCTION NEWSLETTER – APRIL 2020

## Highlights

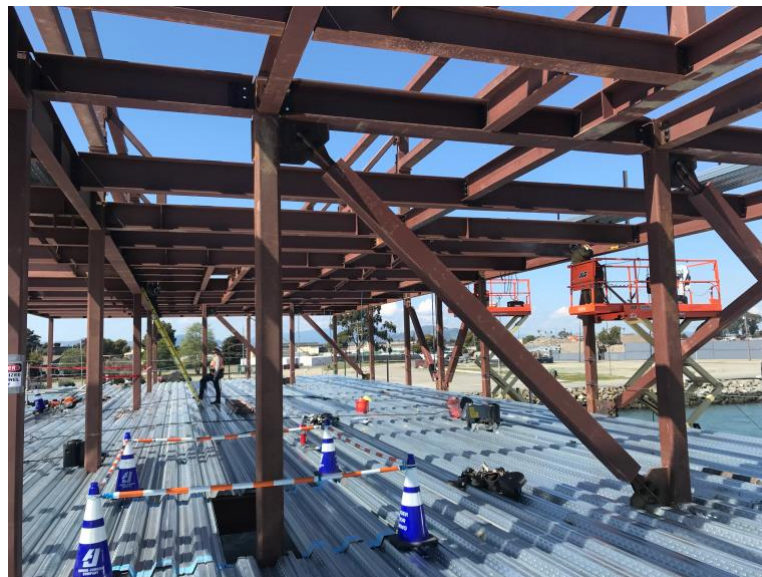
- The City's [Public Health Order No. 19-07b](#) issued on March 31 states that construction of public works projects is considered an "Essential Business." Therefore, work on the Fireboat Station project will continue until further notice. The contractor has updated their health and safety plan based on the guidelines listed in the City's [Directive](#) issued on April 2.
- Welding of structural steel is complete, including canopy at south elevation and patio deck at level 2.
- Welded metal decking and laid out MEP inserts at level 2.

## Construction Activity Schedule

- **April 2020:**
  - Layout and weld metal decking and layout MEP inserts at roof.
  - Install forms and rebar for concrete at level 2 and roof.
  - Place concrete deck slab at level 2.
- **May 2020:**
  - Place concrete deck slab at roof.
  - Begin install of exterior and interior steel stud framing.

## Other Information

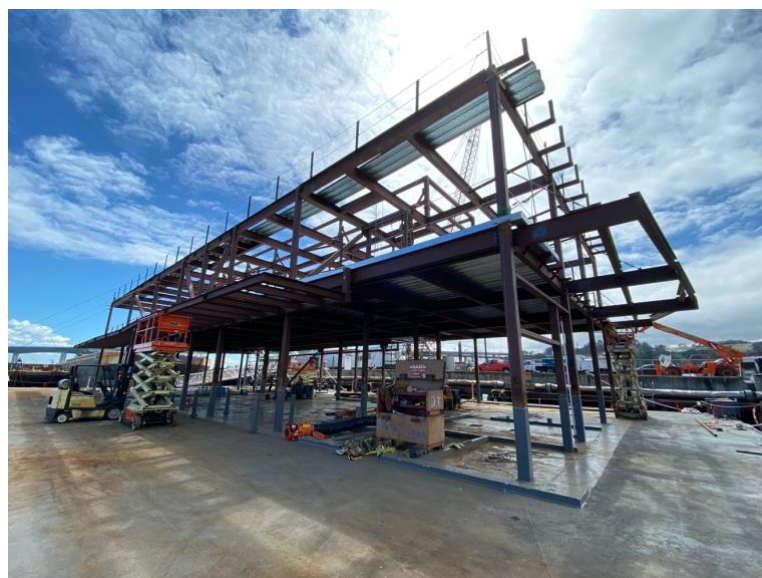
- Fire Station No. 35 at Pier 22½ will remain open and continue to provide landside and waterside service throughout construction.



Welding Structural Steel and Metal Decking at Level 2 – March 26, 2020



Design Rendering – View of Pier 22½ from the Embarcadero



View of South and East Elevations – March 31, 2020

## SCHEDULE

\*Construction schedule is subject to change due to adverse weather and unforeseen conditions.



- Metal decking at roof
- Layout MEP inserts roof
- Place level 2 concrete deck slab

- Place level 2 concrete deck slab
- Exterior steel stud framing
- Interior steel stud framing

- Construction completion
- SFFD move-in

### For more information:

M. Magdalena Ryor, Project Manager  
Magdalena.Ryor@sfdpw.org  
(415) 557-4659

### For immediate service regarding construction issues:

Pano Ray, Resident Engineer  
Pano.Ray@sfdpw.org  
(415) 654-7960

### For emergencies:

Swinerton-Power, a Joint Venture  
Marlene Moncada, Project Manager  
(415) 850-0807