



EARTHQUAKE SAFETY & EMERGENCY RESPONSE BOND 2010

FIRE STATION NO. 5 REPLACEMENT

Issue #17
April 16, 2018

This project will provide a new seismically safe facility for the San Francisco Fire Department.

GENERAL INFORMATION

Project Updates

- Placed slab-on-grade on Monday, 4/9.
- Sawcut control joints in concrete slab-on-grade.
- Interior light-gauge metal stud framing at 2nd and 3rd floors is substantially complete.
- Plumbing rough-in at 2nd and 3rd floors is complete.
- Installed scaffolding at west elevation for installation of exterior light gauge metal framing.

Activities Week of 4/16/2018 - 4/21/2018

- Finish installation of rebar and formwork at 1st floor in preparation for concrete pour of curbs, walls, and equipment pads and encasement of steel columns.
- Setup scaffolding at north and south elevations for installation of exterior light-gauge metal framing.
- Electrical rough-in at 3rd floor.
- Concrete pour of curbs, walls, and equipments pads at 1st floor is scheduled for Friday, 4/20. Watch for traffic control and flaggers.
- Weekend work is tentatively scheduled to occur on Saturday, 4/21.**

Activities Week of 4/23/2018 - 4/28/2018

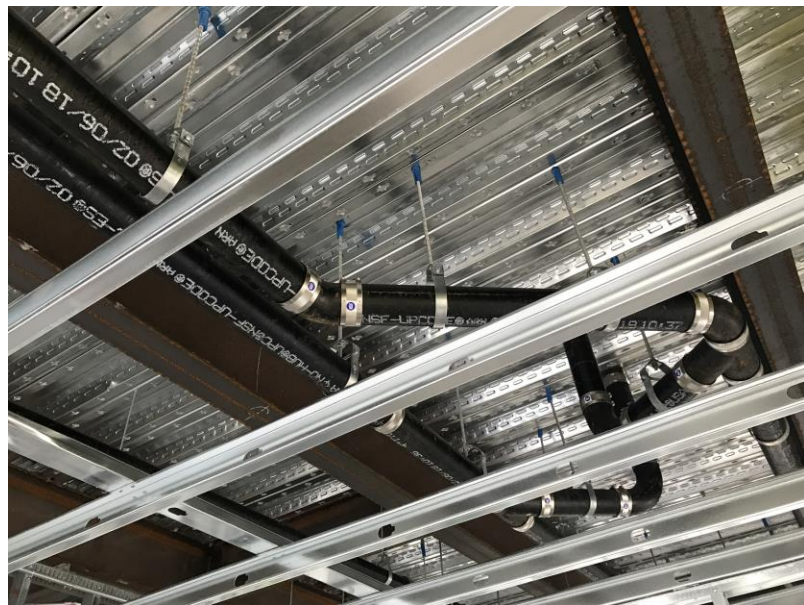
- Fireproof exterior steel beams and columns.
- Finish electrical rough-in at 3rd floor.
- Weekend work is tentatively scheduled to occur on Saturdays, 4/28.**

Other Information

- SFFD is responding from nearby Fire Stations 6 and 38; fire service will continue uninterrupted.
- sf-fire.org/temporary-fire-station-closure-service-status
- View construction progress photos and subscribe to this newsletter: sfearthquakesafety.org/firestations



Slab-On-Grade (April 13, 2018)



Plumbing Rough-In at 2nd Floor Ceiling (April 10, 2018)

SCHEDULE

*Construction schedule is subject to change due to weather or unforeseen conditions.



For more information:

M. Magdalena Ryor, Project Manager
Magdalena.Ryor@sfdpw.org
(415) 557-4659

For immediate service regarding construction issues:

Ray Birmingham, Construction Manager
Ray.Birmingham@sfdpw.org
(415) 244-9748

For emergencies:

Alten Construction
Harry Torrano, Site Superintendent
(415) 559-6063