



EARTHQUAKE SAFETY & EMERGENCY RESPONSE BOND 2010

FIRE STATION NO. 16 REPLACEMENT

Issue #13
May 12, 2017

This project will provide a new seismically safe facility for the San Francisco Fire Department.

GENERAL INFO

Project Updates

- Shoring and underpinning work is complete.
- Excavation for underground utilities and concrete footings and grade beams complete.

Activities Week of 5/15/2017 - 5/20/2017

- Finish placing rebar for moment frames and grade beams.
- Finish placing sleeves for underground utilities.
- **Work is scheduled to occur on Saturday, 5/20.**

Activities Weeks of 5/22/2017 - 6/3/2017

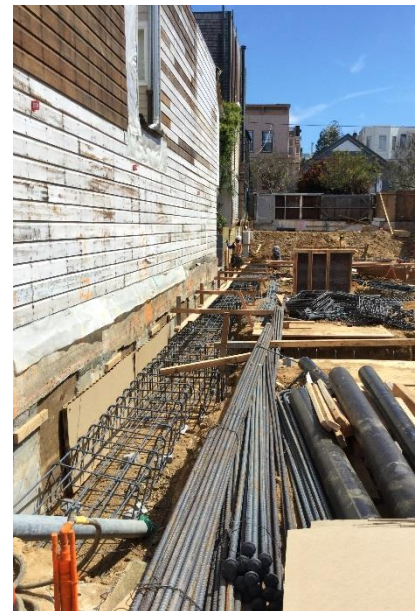
- **Foundation concrete pour is scheduled for Monday, 5/22. Pixley Street will be closed to traffic from 7:00 a.m. to 3:30 p.m. Residents on Pixley Street are advised to park their personal vehicles on neighboring streets the night of 5/21 due to limited access during the concrete pour.**
- Backfill and compaction of soil for foundation.
- Rebar and formwork for lower columns.
- **Work is scheduled to occur Saturdays, 5/27 and 6/3.**

Other Information

- SFFD will be responding from nearby Fire Stations 10 and 51; fire service will continue uninterrupted.
- Contractor's work hours are currently scheduled for 7:00 a.m. to 3:30 p.m.
- Subscribe to this Construction Newsletter online at www.sfearthquakesafety.org/firestation16



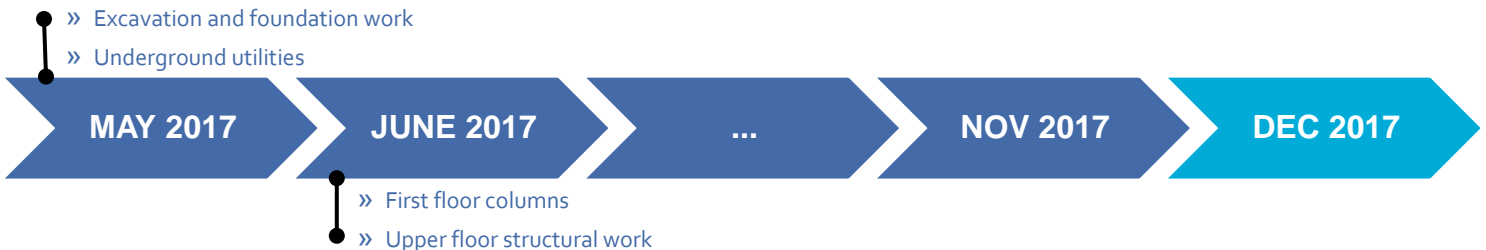
5/11/17: Rebar placement for moment frames and footings.



5/11/17: That's a lot of rebar! Behind the scenes look at the new fire station's advanced structural system.

SCHEDULE

*Construction schedule is subject to change due to weather or unforeseen conditions.



For more information:	For immediate service re: construction issues:	For emergencies :
Gabriella Judd Cirelli, Project Manager Gabriella.Cirelli@sfdpw.org (415) 557-4707	Rob Rowland, Construction Inspector Rob.Rowland@sfdpw.org (415) 264-2511	Roebuck Construction (Emergencies only) Jeff Davino, Superintendent (415) 716-0952