



# EARTHQUAKE SAFETY & EMERGENCY RESPONSE BOND 2010 FIRE STATION NO. 16 REPLACEMENT

Issue #6

November 18, 2016

This project will provide a new seismically safe facility for the San Francisco Fire Department.

## GENERAL INFO

### Activities Week of 11/21 - 11/23

- Ongoing demolition of 2nd floor exterior walls and hose tower.
- Ongoing demolition of front façade.
- No work to occur on Thursday (11/24) or Friday (11/25). HAPPY THANKSGIVING!

### Activities Week of 11/28 - 12/02

- Demolition of building's structural components set to begin. This work will continue through mid-December.
- Preparation for demolition of the structure.

### Other Information

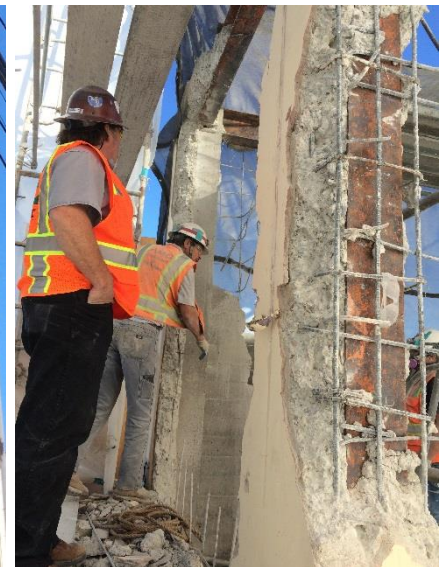
- On 10/4, and thereafter, SFFD will be responding from nearby Fire Stations 10 and 51; fire service will continue uninterrupted.
- Contractor's work hours are currently scheduled for 7:00 a.m. to 3:30 p.m.
- Increase in local traffic and deliveries is expected.
- Contractor has secured an SFMTA permit to park behind the fire station on Pixley Street during construction hours (see affected area in top photo).
- Subscribe to this Weekly Newsletter online at [www.sfearthquakesafety.org/firestation16](http://www.sfearthquakesafety.org/firestation16)



Sidewalk and parking behind the fire station on Pixley to be temporarily closed as needed by Contractor during demolition and construction phases of the project.



Demolition of front façade facing Greenwich Street (11.17.16)



Jeff Davino, Superintendent, overseeing the demolition (11.16.16)

## SCHEDULE

### FENCE INSTALLATION

Oct 2016    Nov 2016    Jan 2017

Dec 2017



ABATEMENT    DEMOLITION

For more information:	For immediate service re: construction issues:	For emergencies :
-----------------------	--	-------------------

Gabriella Judd Cirelli, Project Manager Gabriella.Cirelli@sfdpw.org (415) 557-4707	Rob Rowland, Construction Inspector Rob.Rowland@sfdpw.org (415) 264-2511	Roebuck Construction (Emergencies only) Jeff Davino, Superintendent (415) 716-0952
--	--	--