



EARTHQUAKE SAFETY & EMERGENCY RESPONSE BOND 2010

FIRE STATION NO. 16 REPLACEMENT

Issue #4
October 21, 2016

This project will provide a new seismically safe facility for the San Francisco Fire Department.

GENERAL INFO

Activities Week of 10/24 - 10/28

- Installation of safety barricades and construction fence in front of the fire station on Greenwich Street on Tuesday, 10/25; affecting the pedestrian route (see diagram on right for pedestrian access route).
- Installation of on-site office trailer for General Contractor and Construction Inspector on Tuesday, 10/25.
- Demolition of hose tower scheduled to begin on Wednesday, 10/26.



Pedestrian Access Route on Greenwich Street – within Project Site Limits

Activities Week of 10/31 - 11/04

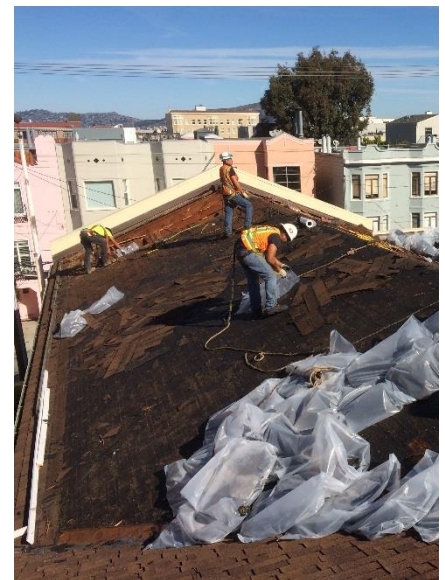
- Demolition of hose tower, building interior, and roof continues.

Other Information

- On 10/4, and thereafter, SFFD will be responding from nearby Fire Stations 10 and 51; fire service will continue uninterrupted.
- Contractor's work hours are currently scheduled for 7:00 a.m. to 3:30 p.m.
- Increase in local traffic and deliveries is expected.
- Contractor is applying for SFMTA permits to park behind the fire station on Pixley Street.
- Subscribe to this Weekly Newsletter online at www.sfearthquakesafety.org/firestation16



(Left) Hose Tower with Scaffolding at Roof (October 18, 2016)



(Right) Preparation for roof demolition (October 19, 2016)

SCHEDULE



For more information:	For immediate service re: construction issues:	For emergencies:
Gabriella Judd Cirelli, Project Manager Gabriella.Cirelli@sfdpw.org (415) 557-4707 sfearthquakesafety.org/firestation16	Rob Rowland, Construction Inspector Rob.Rowland@sfdpw.org (415) 264-2511	Roebuck Construction (Emergencies only) After Hours Contact: Jeff Davino, Superintendent (415) 716-0952