



EARTHQUAKE SAFETY & EMERGENCY RESPONSE BOND 2010

FIRE STATION NO. 5 REPLACEMENT

Issue #16

March 30, 2018

This project will provide a new seismically safe facility for the San Francisco Fire Department.

GENERAL INFORMATION

Project Updates

- Installation of underground utilities is complete.
- Installation of edge formwork, vapor barrier, and rebar for slab-on-grade (SOG) is complete.
- Placed concrete at metal stairpans and HVAC equipment pads on roof on Monday, 3/26.
- **Weekend work is scheduled to occur on Saturday, 3/31.**

Activities Week of 4/2/2018 - 4/7/2018

- Finish installation of interior light-gauge metal stud framing at 3rd floor.
- Plumbing and electrical rough-in at 3rd floor.
- **Weekend work is tentatively scheduled to occur on Saturday, 4/7.**

Activities Week of 4/9/2018 - 4/14/2018

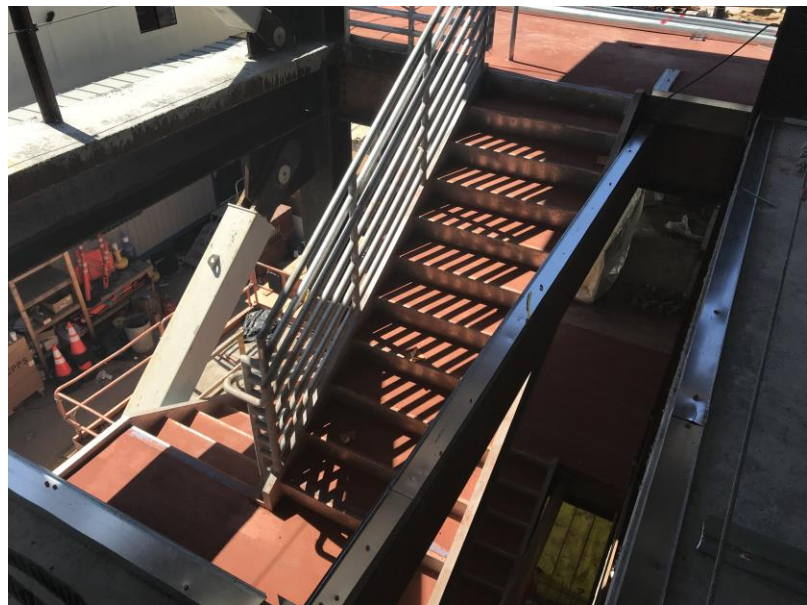
- Concrete pour of slab-on-grade has been re-scheduled, due to weather conditions, for Monday, 4/9, from 7AM to 5PM. Watch for traffic control and flaggers.
- Sawcut joints in concrete slab-on-grade.
- Install formwork at 1st floor in preparation for concrete pour of curbs, walls and equipment pads and encasement of steel columns.
- Set-up scaffolding at west elevation for installation of exterior light-gauge metal framing.
- **Weekend work is tentatively scheduled to occur on Saturdays, 4/14.**

Other Information

- SFFD is responding from nearby Fire Stations 6 and 38; fire service will continue uninterrupted.
- sf-fire.org/temporary-fire-station-closure-service-status
- View construction progress photos and subscribe to this newsletter: sfearthquakesafety.org/firestations5



Vapor Barrier and Rebar Layout for Slab-On-Grade (March 28, 2018)



Stairwell from 2nd Floor to 3rd Floor (March 28, 2018)

SCHEDULE

*Construction schedule is subject to change due to weather or unforeseen conditions.



For more information:

M. Magdalena Ryor, Project Manager
 Magdalena.Ryor@sfdpw.org
 (415) 557-4659

For immediate service regarding construction issues:

Ray Birmingham, Construction Manager
 Ray.Birmingham@sfdpw.org
 (415) 244-9748

For emergencies:

Alten Construction
 Harry Torrano, Site Superintendent
 (415) 559-6063