



EARTHQUAKE SAFETY & EMERGENCY RESPONSE BOND 2010

FIRE STATION NO. 5 REPLACEMENT

Issue #1
May 15, 2017

This project will provide a new seismically safe facility for the San Francisco Fire Department.

GENERAL INFO

Project Updates

- Sidewalk along Turk and Webster Streets will be closed (see photo on right). Way-finding signage will be in place to assist pedestrians during construction.

Activities Week of 5/15/2017 - 5/19/2017

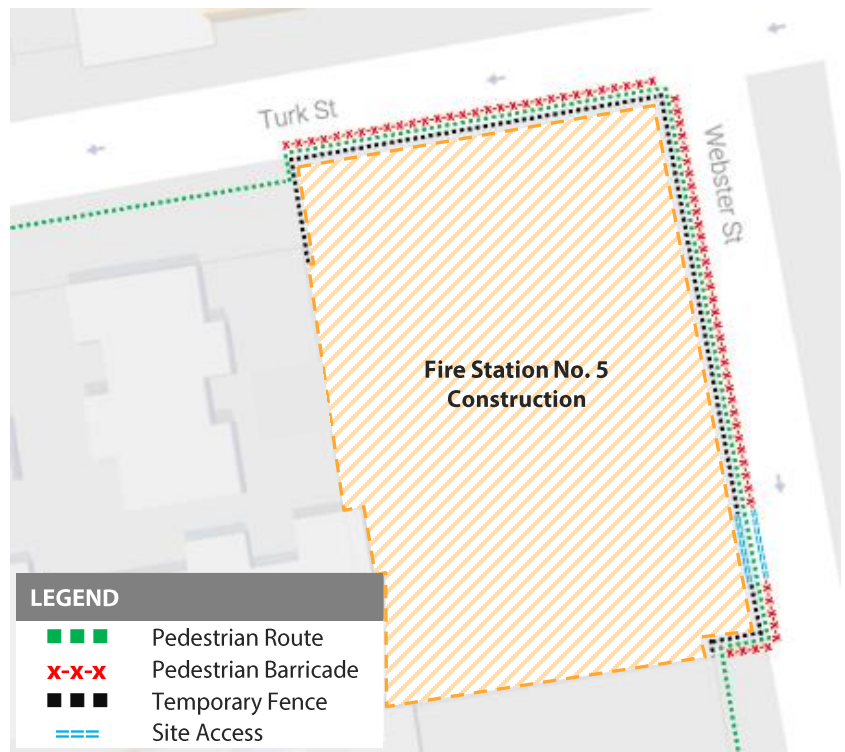
- Soft demolition of building.

Activities Weeks of 5/22/2017 - 6/2/2017

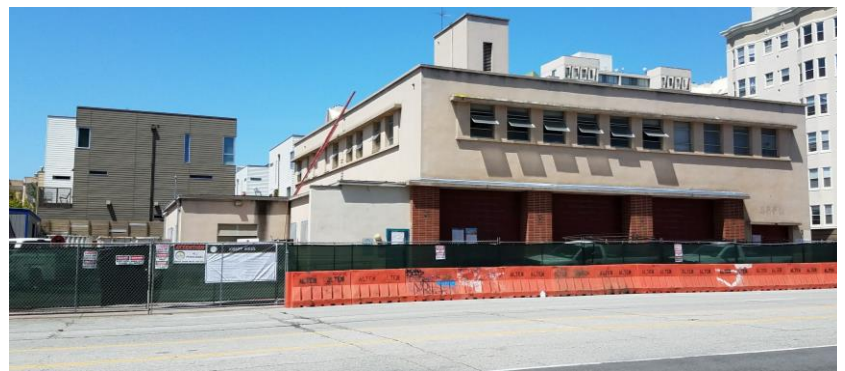
- Demolition of building structure and concrete pavements. These activities will likely result in noise and dust commonly associated with such work.
- Construction waste debris will be sorted and off-hauled from site regularly.
- Removal of existing underground fuel tank at front of station along Webster Street.

Other Information

- SFFD will be responding from nearby Fire Stations 6 and 38; fire service will continue uninterrupted.
- Contractor's work hours are currently scheduled for 7:00 a.m. to 3:30 p.m.
- Increase in local traffic and deliveries is expected.
- Subscribe to this Construction Newsletter online at <http://www.sfearthquakesafety.org/firestations>



Pedestrian accessible route during construction.



View of project site from Webster Street.

SCHEDULE

*Construction schedule is subject to change due to weather or unforeseen conditions.



For more information:	For immediate service re: construction issues:	For emergencies :
Gabriella Judd Cirelli, Project Manager Gabriella.Cirelli@sfdpw.org (415) 557-4707	Ray Birmingham, Construction Manager Ray.Birmingham@sfdpw.org (415) 244-9748	Alten Construction (Emergencies only) Harry Tarrano, Site Superintendent (415) 559-6063