



# EARTHQUAKE SAFETY & EMERGENCY RESPONSE BOND 2010

## FIRE STATION NO. 16 REPLACEMENT

Issue #32  
May 14, 2018

This project will provide a new seismically safe facility for the San Francisco Fire Department.

### GENERAL INFO

#### Project Updates

- Finished fire sprinkler rough-in.
- Excavated sidewalk at Greenwich Street to uncover underground storage tank (UST) on Friday, 5/11.

#### Activities Week of 5/14/2018 - 5/19/2018

- Continue elevator rough-in work at 1st floor, 2nd floor, and roof.
- Continue HVAC and electrical rough-in throughout building.
- Finish taping and finishing of drywall prior to painting the interior walls.
- Begin installation of blue roof at 2nd floor terrace facing Pixley Street.
- Begin installation of storefront at 2nd floor facing Greenwich Street.
- Begin installation of T-bar grid at interior ceilings.
- **Weekend work is tentatively scheduled to occur on Saturday, 5/19.**

#### Activities Weeks of 5/21/2018 - 5/26/2018

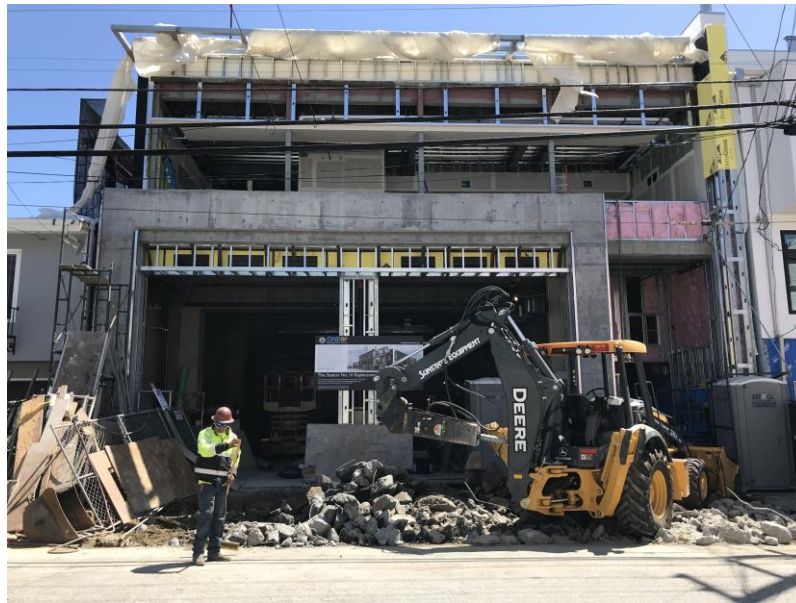
- Finish elevator rough-in work.
- Finish HVAC and electrical rough-in.
- Continue installation of blue roof and storefront.
- **Weekend work is tentatively scheduled to occur on Saturday, 5/26.**

#### Other Information

- SFFD will be responding from nearby Fire Stations 10 and 51; fire service will continue uninterrupted.
- [sf-fire.org/temporary-fire-station-closure-service-status](http://sf-fire.org/temporary-fire-station-closure-service-status)
- View construction progress photos and subscribe to this newsletter: [sfearthquakesafety.org/firestation16](http://sfearthquakesafety.org/firestation16)



Installation of Accessible Elevator (May 9, 2018)



Sidewalk Excavation at Greenwich Street (May 9, 2018)

### SCHEDULE

\*Construction schedule is subject to change due to weather or unforeseen conditions.



#### For more information:

M. Magdalena Ryor, Project Manager  
Magdalena.Ryor@sfdpw.org  
(415) 557-4659

#### For immediate service regarding construction issues:

Rob Rowland, Construction Inspector  
Robert.Rowland@sfdpw.org  
(415) 264-2511

#### For emergencies :

Roebuck Construction  
Jeff Davino, Superintendent  
(415) 716-0952