



EARTHQUAKE SAFETY & EMERGENCY RESPONSE BOND 2010 FIRE STATION NO. 16 REPLACEMENT

Issue #9
January 27, 2017

This project will provide a new seismically safe facility for the San Francisco Fire Department.

GENERAL INFO

Project Highlights

- Demolition of roof complete.

Activities Week of 1/30/2017 - 2/3/2017

- Demolition of south wall facing Pixley Street.
- Demolition of hose tower walls.
- Demolition of structural steel at 2nd floor.

Activities Week of 2/6/2017 - 2/10/2017

- Demolition activities to be completed.
- Debris removal and site clean-up.
- Installation of temporary fencing.

Other Information

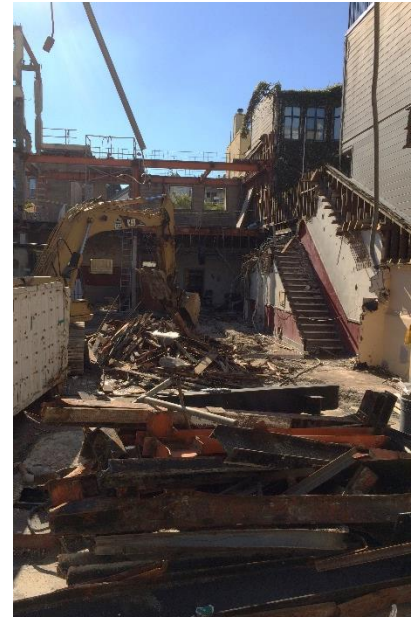
- On 10/4, and thereafter, SFFD will be responding from nearby Fire Stations 10 and 51; fire service will continue uninterrupted.
- Contractor's work hours are currently scheduled for 7:00 a.m. to 3:30 p.m.
- Increase in local traffic and deliveries is expected.
- Contractor has secured an SFMTA permit to park behind the fire station on Pixley Street during construction hours.
- Subscribe to this Construction Newsletter online at www.sfearthquakesafety.org/firestation16



Hydraulic extractor used to demo the existing fire station's east wall (01.25.2017)



No stopping on Pixley Street directly behind the fire station during construction hours.



Site separation of demolition debris for recycling.

SCHEDULE

*Construction schedules are subject to change due to weather or unforeseen conditions.



For more information:

Gabriella Judd Cirelli, Project Manager
Gabriella.Cirelli@sfdpw.org
(415) 557-4707

For immediate service re: construction issues:

Rob Rowland, Construction Inspector
Rob.Rowland@sfdpw.org
(415) 264-2511

For emergencies :

Roebuck Construction (Emergencies only)
Jeff Davino, Superintendent
(415) 716-0952