



EARTHQUAKE SAFETY & EMERGENCY RESPONSE BOND 2010

FIRE STATION NO. 16 REPLACEMENT

Issue #3
October 14, 2016

This project will provide a new seismically safe facility for the San Francisco Fire Department.

GENERAL INFO

Activities Week of 10/17 - 10/21

- Installation of safety barricades in front of the fire station on Greenwich Street; affecting the pedestrian route (see diagram on right for pedestrian access route).
- Installation of construction fence in front of the fire station on Greenwich Street.
- Containment for safe removal of hazardous materials continues.
- Demolition of interior spaces continues.

Activities Week of 10/24 - 10/28

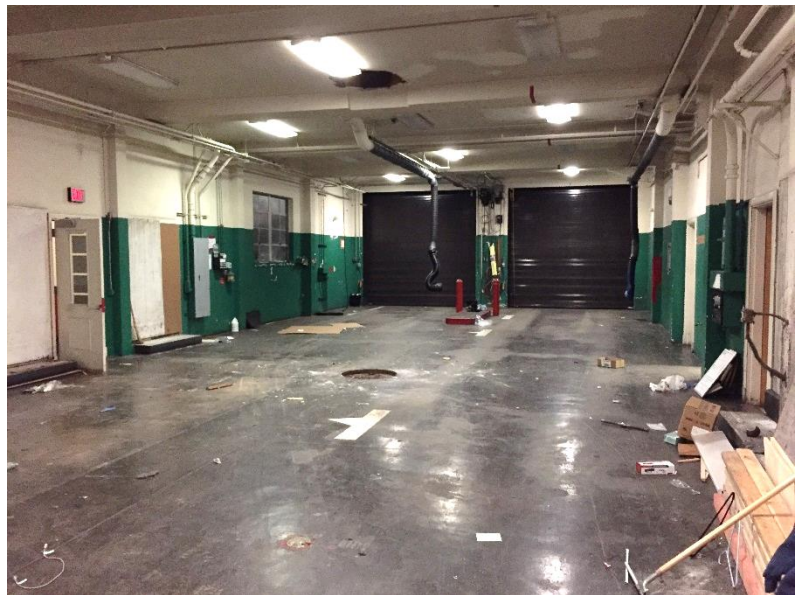
- Installation of scaffolding in preparation for demolition of hose tower.
- Preparation for demolition of roof.

Other Information

- On 10/4, and thereafter, fire service will continue uninterrupted; SFFD will be responding from nearby Fire Stations 10 and 51.
- Contractor's work hours are currently scheduled for 7:00 a.m. to 3:30 p.m.
- Increase in local traffic and deliveries is expected.
- Contractor is applying for SFMTA permits to park behind the fire station on Pixley Street.

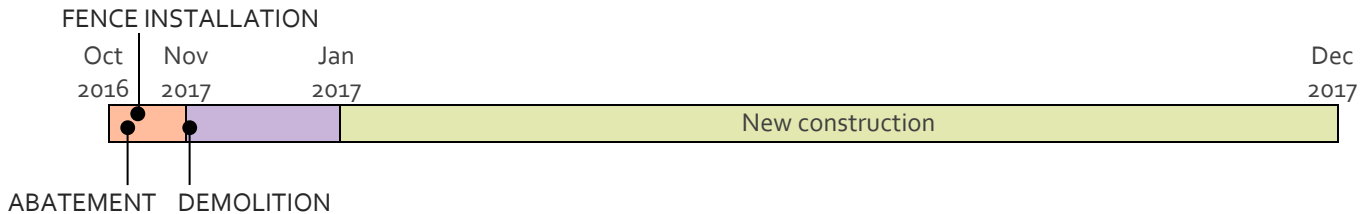


Pedestrian Access Route on Greenwich Street – within Project Site Limits



Contractor's First Day on the Site! [October 10, 2016]

SCHEDULE



For more information:	For immediate service re: construction issues:	For emergencies:
Gabriella Judd Cirelli, Project Manager Gabriella.Cirelli@sfdpw.org (415) 557-4707 searthquakesafety.org/firestation16.html	Rob Rowland, Construction Inspector Rob.Rowland@sfdpw.org (415) 264-2511	Roebuck Construction (Emergencies only) After Hours Contact: Jeff Davino, Superintendent (415) 716-0952